

Declaration of performance

DoP number: 12803012-B1W1280

Product name:

RANGEMORE RED MULTI

(1) Identification code of product-type is DoP-number

(2) Reference number: 12803012-B1W1280

(4)



Wienerberger

Wienerberger NV

8500 Kortrijk Kapel ter Bede

(3) Intended use(s) in masonry walls, columns and partitions for:

unprotected masonry

(6) Assessment and verification of constancy of performance:

System 2+

(7) Notified Body:

0749

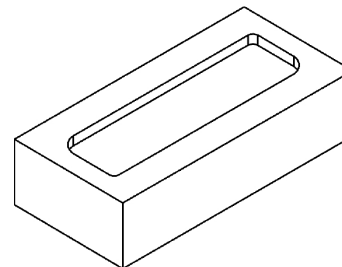
Performed:

(i) initial inspection of the manufacturing plant and of factory production control

(ii) continuous surveillance, assessment and evaluation of factory production control and issued certificate number 0749-CPD-BC2-201

(9) Declared performance:

Type of unit:		HD -masonry unit		
Dimensions and tolerances			Tm	Rm
Length:	mm	215	± 6	9
Width:	mm	102	± 4	6
Height:	mm	65	± 3	5
Tolerance:	category	T1		
Range:	category	R1		
Flatness of bed faces:	mm	NPD		
Plane parallelism:	mm	NPD		
Configuration				
Group of the unit:	-	1		
Volume of all formed voids:	%	NPD		
Volume of frogs:	%	< 20		
Density				
Gross dry density:	kg/m ³	1700		
Net dry density:	kg/m ³	1750		
Tolerance:	category / %	D1 / 10		
Compressive strength				
Category:	-	I		
Perpendicular to bedface:	N/mm ²	12		
Perpendicular to header:	N/mm ²	NPD		
Perpendicular to header 2:	N/mm ²	NPD		
Bond strength:	N/mm ²	NPD		
Thermal conductivity λ ₁₀ , dry, unit:	W/(m·K)	0.69		Determination method EN 1745:2012: S1
Water vapour permeability:	-	μ = 5/10		Tabulated min. and max. value according EN 17.
Durability:	category	F2		
Water absorption:	%	15		EN 772-21
Initial rate of water absorption:	kg/(m ² ·min)	3-8		EN 772-11
Active soluble salt content:	category	S2		
Moisture movement:	mm/m	NPD		
Reaction to fire:	class	A1		EN 13501-1
Dangerous substances:	-	NPD		



actual configuration may vary slightly

EN 771-1:2011

(10) The performance of the product is in accordance with the specification above.

Signed on behalf of the manufacturer:

CEO
2013-07-01

Johan Van Der Biest

Wienerberger NV
8500 Kortrijk Kapel ter Bede

Supplementary national information:

DoP number: 12803012-B1W1280

Product name:

RANGEMORE RED MULTI

(1) Identification code of product-type is DoP-number

(2) Reference number: 12803012-B1W1280

(4)



Wienerberger

Wienerberger NV

8500 Kortrijk Kapel ter Bede