

# Declaration of performance

DoP number: 12802512-B1W1280

Product name:

TOPAAS

(1) Identification code of product-type is DoP-number

(2) Reference number: 12802512-B1W1280

(4)



# Wienerberger

Wienerberger NV

8500 Kortrijk Kapel ter Bede

(3) Intended use(s) in masonry walls, columns and partitions for:

unprotected masonry

(6) Assessment and verification of constancy of performance:

System 2+

(7) Notified Body:

0749

Performed:

(i) initial inspection of the manufacturing plant and of factory production control

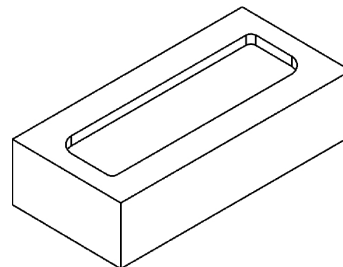
(ii) continuous surveillance, assessment and evaluation of factory production control and issued certificate number 0749-CPD-BC2-201

## (9) Declared performance:

Type of unit: HD -masonry unit

### Dimensions and tolerances

			Tm	Rm
Length:	mm	215	± 6	9
Width:	mm	102	± 4	6
Height:	mm	65	± 3	5
Tolerance:	category	T1		
Range:	category	R1		
Flatness of bed faces:	mm	NPD		
Plane parallelism:	mm	NPD		



actual configuration may vary slightly

### Configuration

Group of the unit:	-	1		
Volume of all formed voids:	%	NPD		
Volume of frogs:	%	< 20		

### Density

Gross dry density:	kg/m <sup>3</sup>	1600		
Net dry density:	kg/m <sup>3</sup>	1750		
Tolerance:	category / %	D1 / 10		

### Compressive strength

Category:	-	1		
Perpendicular to bedface:	N/mm <sup>2</sup>	12		
Perpendicular to header:	N/mm <sup>2</sup>	NPD		
Perpendicular to header 2:	N/mm <sup>2</sup>	NPD		
Bond strength:	N/mm <sup>2</sup>	NPD		

Thermal conductivity λ<sub>10</sub>, dry, unit:

W/(m·K) 0.69 Determination method EN 1745:2012: S1

Water vapour permeability:

- μ = 5/10

Durability:

category F2

Water absorption:

% 15 EN 772-21

Initial rate of water absorption:

kg/(m<sup>2</sup>·min) 0.01-6

Active soluble salt content:

category S2

Moisture movement:

mm/m NPD

Reaction to fire:

class A1

Dangerous substances:

- NPD

(10) The performance of the product is in accordance with the specification above.

Signed on behalf of the manufacturer:

CEO  
2013-07-01 Johan Van Der Biest



Wienerberger NV  
8500 Kortrijk Kapel ter Bede

EN 771-1:2011

## Supplementary national information:

DoP number: 12802512-B1W1280

Product name:

TOPAAS

(1) Identification code of product-type is DoP-number

(2) Reference number: 12802512-B1W1280

(4)



# Wienerberger

Wienerberger NV

8500 Kortrijk Kapel ter Bede